

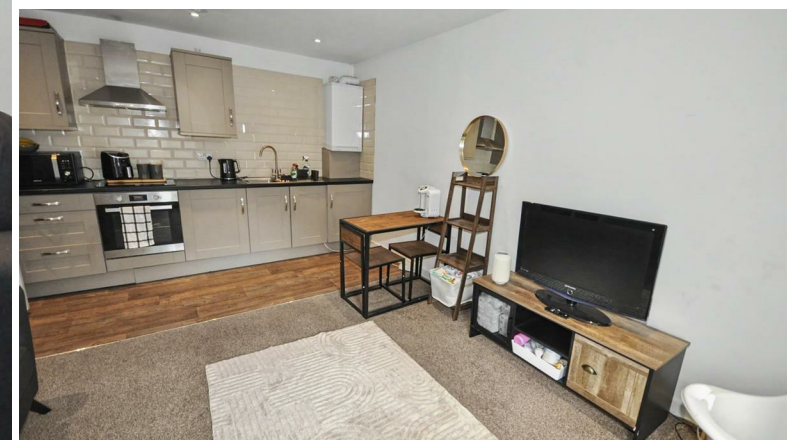
ehB
RESIDENTIAL

Your Property - Our Business



116, Birmingham Road, Warwick

£875 Per
Calendar Month



A one bedroom, first floor Apartment situated a short distance from Warwick Town Centre. Unfurnished & Available 26th June.

Living Room/Kitchen

12'5" x 12'1" (3.79 x 3.69)

Bedroom

12'5" x 12'1" (3.79 x 3.69)

Bathroom

7'10" x 5'7" (2.40 x 1.72)

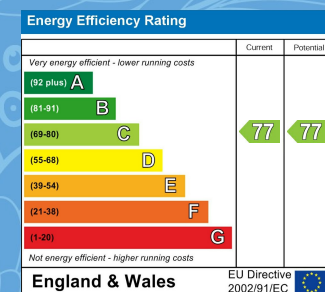


Your Property - Our Business

- Residential Estate Agents
- Lettings and Property Managers
- Land and New Homes Agents

Leamington Spa Office
Somerset House
Clarendon Place
Royal Leamington Spa
CV32 5QN

01926 881144 ehbresidential.com



Also at: Warwick, 17-19 Jury St, Warwick CV34 4EL